

7' Diamond Peak LED Tree

MODEL NO: U11G684A-024-01
(WL-019)

ASSEMBLY INSTRUCTIONS

**PRODUCT CODE:
140-034067-090**

CAUTION:
**Carefully Read
Instructions and
Procedures for
Safe Operation.**

Receipt of Purchase:
Questions, problems, or missing parts?
Before returning to place of purchase,
please contact us at 866-210-5958.
7 am - 9 pm, CST, Monday-Friday.
Willis Electric customer service
representative will be glad to assist
you.

**UPC CODE:
0 30539 015435**



Attach Here



ASSEMBLY INSTRUCTIONS FOR ROTATING TREE STAND

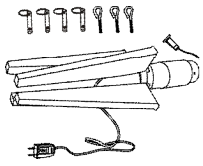
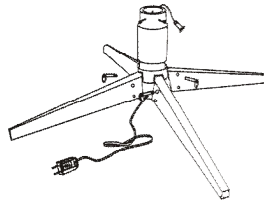


Fig.1

1. Tree stand parts include: rotating metal stand, eye bolts and screw bolts. (See Fig.1)



2. Open stand on 90 degree angle until the holes line up with the holes on the tube. Screw an eye bolt into each hole. (See Fig.2)

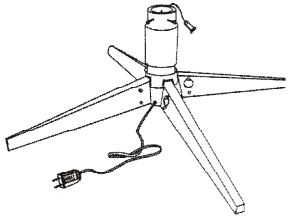


Fig.3

3. Screw the screw bolts into the hole. (See Fig.3)

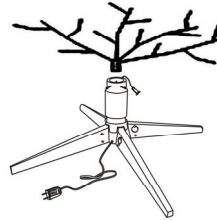


Fig.4

4. Carefully insert tree into the stand and adjust so pole is firmly inserted into stand and screw is tightened. (See Fig.4)

ASSEMBLY INSTRUCTIONS FOR TREE

1. Before you start to assemble the tree, choose an appropriate location near a grounded outlet.
2. Assemble the tree from the bottom to the top. Assemble tree stand according to the assembly instruction for the tree stand.

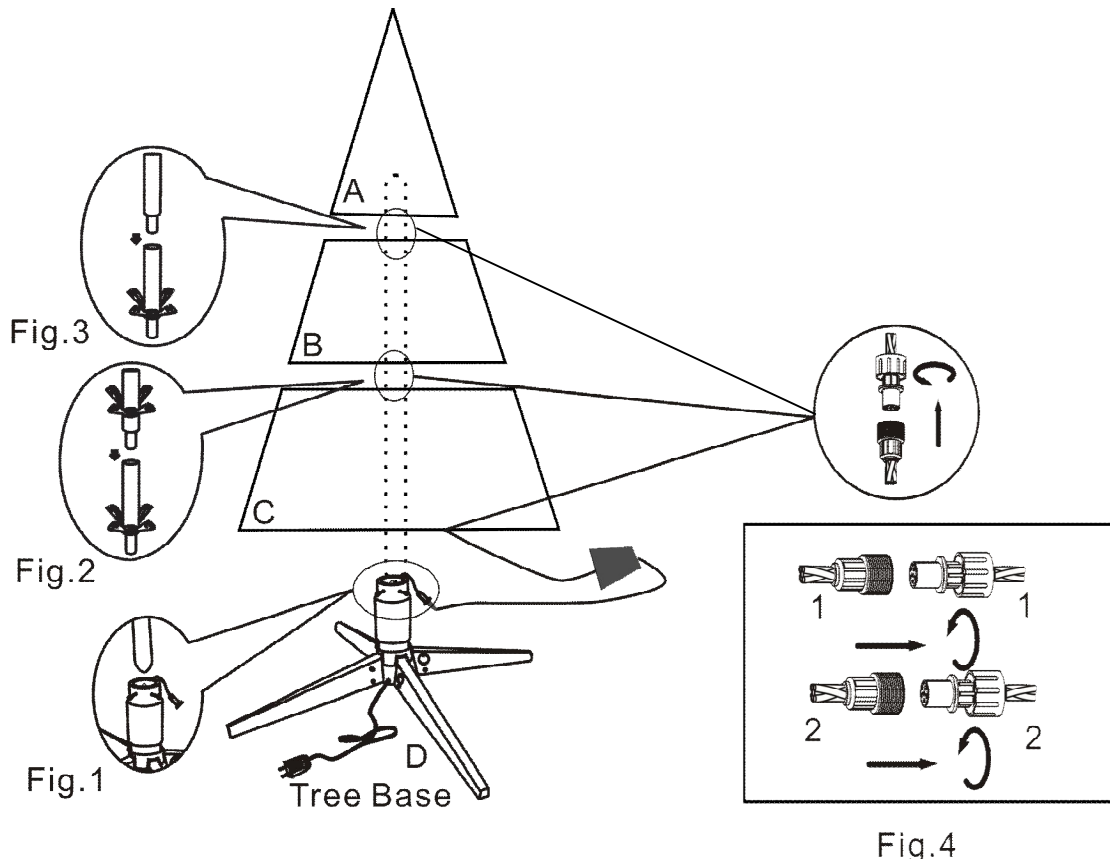


Fig.4

3. Insert lower section(C) into the tree stand base (D) (see Fig.1); Insert the middle section (B) into (C) (see Fig. 2). Insert the top section (A) into (B) (see Fig. 3).
4. Join the male and female connector, which has the same matching color according to the magnified drawing. (see Fig. 4)
5. Open all the branches (see Fig. 5).
6. Shape the branches. Start with tips farthest from the trunk, one to the right; one to the left and one at the center of the main stem (see Fig. 6).



Fig. 5

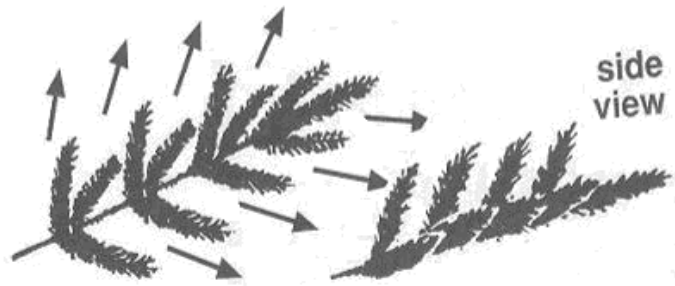


Fig. 6

7. Plug the cord from the tree into the receptacle on the tree base.
8. Insert the plug from the tree base into a properly grounded outlet. Adjust the control box to the desired light pattern.
9. Use a cable tie to fix the control box on a branch of section (C) of the tree.

ASSEMBLY INSTRUCTION TO USE TREE WITHOUT ROTATING FUNCTION.

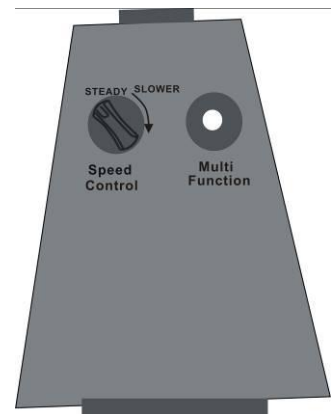
1. Unplug the cord from the grounded outlet in wall.
2. Locate cord from section C that is currently plugged into the receptacle on the tree base. Unplug from the receptacle base and plug into properly grounded outlet. Your tree will now light up without the rotation of the tree.

HOW TO USE THE CONTROL BOX:

1. Rotate the **SPEED CONTROL** knob to determine the speed of the function selected
2. Push **MULTI FUNCTION** button to select the motion effect you desired.

Different choices of light patterns for selection:

1. Auto Combination
2. Warm White Steady-on, Multi Cascade
3. Warm White Steady-on, Multi Fade-in & Fade-out
4. Warm White Fade-in & Fade-out, Multi Steady-on
5. Steady-on
6. Warm White Steady-on
7. Multi Steady-on
8. Warm White Steady-on, Multi Twinkle
9. Warm White Twinkle, Multi Steady-on
10. Warm White Steady-on, Multi Random Twinkle
11. Fade-in & Fade-out



TROUBLE SHOOTING (If Lights Do Not Work):

1. If entire tree does not light, make sure extension cord plug is securely inserted into a working electrical outlet.
2. Check whether all bulbs are tightly fixed inside the lamp holder.
3. If a bulb is blown or broken, replace the faulty bulb according to bulb replacement instructions below.
4. If the fuse in the light set plug or extension cord plug is blown, replace the blown fuse according to fuse replacement instructions below.

5. If you are still experiencing problems with your tree, please contact our customer service representative at 866-210-5958.

CAUTION! – ALWAYS UNPLUG YOUR TREE FROM ITS POWER SOURCE BEFORE ATTEMPTING EITHER FUSE OR BULB REPLACEMENT.

USE AND CARE INSTRUCTIONS

FUSE REPLACEMENT

This product comes with an overload protection (fuse). A blown fuse indicates an overload or short circuit. If a fuse blows, unplug tree from wall outlet. Replace the fuse as per the fuse replacement instructions below (follow product marking for proper fuse rating). If the replacement fuse blows, a short circuit may be present and the product should be reviewed to determine the cause.

Light set fuse replacement (replaceable 5-amp 125V fuses are located in the plug)

1. Grasp plug and remove from its power source (Illustration.1).
2. Locate blown fuse(s) by sliding access cover on top of plug towards prongs.
3. Remove blown fuse by turning the plug over. Fuses should fall into your hand (Gentle tapping may be required).
4. Insert new fuse. Close fuse cover by sliding fuse access cover towards the cord.

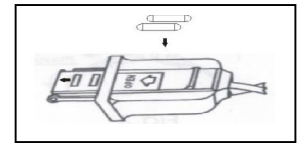


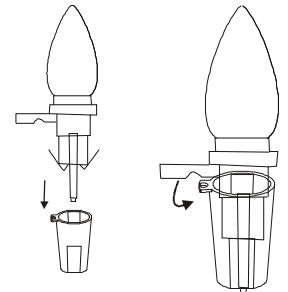
Illustration 1

CAUTION: To reduce risk of fire – replace fuse in tree stand plug with only 5-amp 125 volt fuse (Illustration.1).

Do not replace attachment plug. Discard product if the attachment plug is damaged.

BULB REPLACEMENT:

1. Grasp plug and remove from its power source
2. Pull bulbs and plastic base straight out of socket. Do not twist bulbs.
3. Replace burned bulb with 3.0 volt 0.06 watt LED bulb ONLY. (Additional bulbs are included for your convenience).



IMPORTANT SAFETY INSTRUCTIONS

READ AND FOLLOW ALL SAFETY INSTRUCTIONS

- a) Do not use seasonal products outdoors unless marked suitable for indoor and outdoor use. When products are used in outdoor applications, connect the product to a Ground Fault Circuit Interrupting (GFCI) outlet. If one is not provided, contact a qualified electrician for proper installation.
- b) This seasonal use product is not intended for permanent installation or use.
- c) Do not mount or place near gas or electric heaters, fireplaces, candles or other similar sources of heat.
- d) Do not secure the wiring of the product with staples or nails, or place on sharp hooks or nails.
- e) Do not let lamps rest on the supply cord or on any wire.
- f) Unplug the product when leaving the house, when retiring for the night, or if left unattended.
- g) This is an electric product – not a toy! To avoid risk of fire, burns, personal injury and electric shock it should not be played with or placed where small children can reach it.
- h) Do not use this product for other than its intended use.
- i) Do not hang ornaments or other objects from cord, wire, or light string.
- j) Do not cover the product with cloth, paper or any material not part of the product when in use.
- k) This product is equipped with push-in type lamps. Do not twist lamps.
- l) This product has a polarized plug (one blade is wider than the other) as a feature to reduce the risk of electric shock. This plug will fit in a polarized outlet only one way. If the plug does not fit fully in the outlet, reverse

the plug. If it still does not fit, contact a qualified electrician. Do not use with an extension cord unless plug can be fully inserted. Do not alter or replace the plug.

- m) This product employs overload protection (fuse). A blown fuse indicates an overload or short circuit situation. If the fuse blows, unplug the product from the outlet. Also unplug any additional strings or products that may be attached to the product. Replace the fuse as per the user servicing instructions (follow product marking for proper fuse rating) and check the product. If the replacement fuse blows, a short-circuit may be present and the product should be discarded.
- n) Read and follow all instructions that are on the product or provided with the product.

SAVE THESE INSTRUCTIONS

BASIC PRECAUTIONS SHOULD BE FOLLOWED WHEN USING THIS PRODUCT: (Inspect product carefully before using or re-using):

1. This is an electrical product – not a toy! To avoid risk of fire, burns, personal injury and electrical shock it should not be played with.
2. Do not hang ornaments or other objects from cord, wire, or light string. Hang ornaments only on the tree itself.
3. For your safety, unplug the product when leaving the house, retiring for the night, or if left unattended.
4. Do not let bulbs rest on the supply cord or on any wire.
5. Do not close doors or windows on the product or extension cords as this may damage the wire insulation.
6. Should you discover any of the following: a) cut, damaged, or frayed wire insulation; b) cracks in the sockets; c) loose connections or exposed wires, please call us.

STORAGE: When storing the product, carefully remove the product from wherever it is placed, including trees, branches, or bushes, to avoid any undue strain or stress on the product conductors, connections, and wires. Disassembled tree can be stored in its original box. Store tree in a cool dry place where the temperature does not exceed 100 degrees Fahrenheit.