



Safety Information

IMPORTANT SAFETY INSTRUCTIONS

When using electrical products, basic precautions should always be followed including the following:

a) READ AND FOLLOW ALL SAFETY INSTRUCTIONS.

- b) This product is for indoor use only. The electrical rating 0.2 A 120 V 60 Hz.
- c) Do not use this product outdoors.
- d) This seasonal use product is not intended for permanent installation or use.
- e) Do not mount or place near gas or electric heaters, fireplace, candles or other similar sources of heat.
- f) Do not secure the wiring of the product with staples or nails, or place on sharp hooks or nails.
- g) Do not let lamps rest on the supply cord or on any wire.
- h) Unplug the product when leaving the house, or when retiring for the night, or if left unattended.
- i) This is an electric product – not a toy! To avoid risk of fire, burns personal injury and electric shock it should not be played with or placed where small children can reach it.
- j) Do not use this product for other than its intended use.
- k) Do not hang ornaments or other objects from cord, wire, or light string.
- l) Do not close doors or windows on the product or extension cords as this may damage the wire insulation.
- m) Do not cover the product with cloth, paper or any material not part of the product when in use.
- n) This product is equipped with push-in type lamps. Do not twist lamps.
- o) This product employs overload protection (fuse). A blown fuse indicates an overload or short-circuit situation. If the fuse blows, unplug the product from the outlet. Also unplug any additional strings or products that may be attached to the product. Replace the fuse as per the user servicing instructions (follow product marking for proper fuse rating) and check the product. If the replacement fuse blows, a short-circuit may be present and the product should be discarded.
- p) Read and follow all instructions that are on the product or provided with the product.

q) SAVE THESE INSTRUCTIONS.

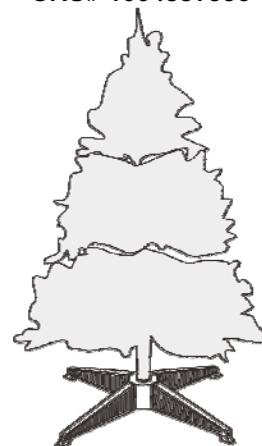
CAUTION! – ALWAYS UNPLUG YOUR TREE FROM ITS POWER SOURCE BEFORE ASSEMBLING OR DISASSEMBLING.

CAUTION

- a) To reduce the risk of electric shock, use only with the power-supply cord provided or with a cord set intended for indoor use.
- b) Do not use a cracked, frayed, or damaged cord. Inspect the cord periodically.
- c) Do not abuse cord – Do not carry product by the cord or yank or pull it to disconnect from the outlet.
- d) Disconnect the product from the outlet when not in use.





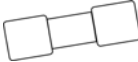

6.5FT FESTIVE PINE WITH 250L WARM WHITE LED

SKU# 1004339556



Pre-Assembly

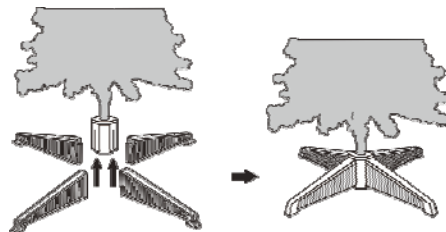
Package Contents

A. Tree top Qty: 1 	B. Tree center Qty: 1 	C. Tree bottom with base Qty: 1 
D. Legs of Tree base Qty: 4 	E. Fuse Qty: 2 	F. Replacement bulb Qty: 6 

Assembly

Assembling the tree stand

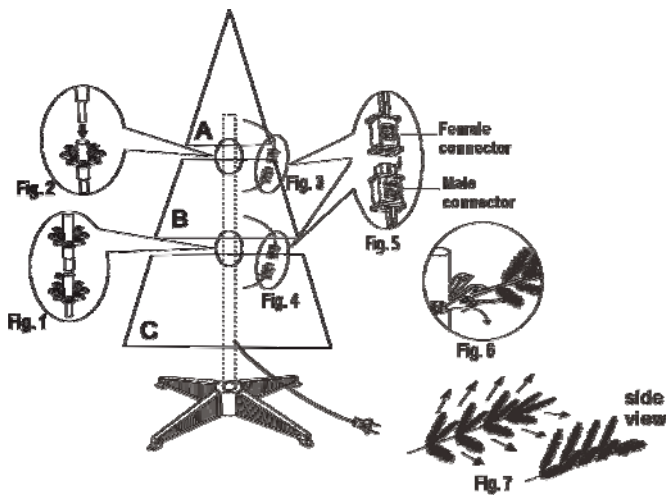
- Step 1. Choose a location near a wall outlet.
- Step 2. Insert and slide the legs upward into the slots of the base until firmly secured. (Note: The base is already on the tree section (C).



Assembling the tree

Please remove protective covers from the base of the pole for each tree section before assembling.

- Step 1. Carefully insert the middle section (B) of the tree into the bottom section (C). (See Fig. 1)
- Step 2. Insert the top section (A) into the middle section (B). (See Fig. 2)
- Step 3. Insert the male connector of the middle section (B) into the female connector of the top section (A), the male connector of the bottom section (C) into the female connector of the middle section (B) in right direction properly and tightly according to the magnified drawing on Fig. 5) . (See Fig.3,4,5)



- Step 4. Allow branches to fall into place or gently pull branches up and out. When adjusting branches be sure that all wires are free of branch hinges. (See Fig. 6)
- Step 5. Shape the branches. Starting with tips closest to the pole, shape one tip to the right, one to the left and one at the center of the main stem. Repeat pattern for each branch. (See Fig. 7)
- Step 6. Plug the power cord from the tree section (C) into a proper outlet.

Operation

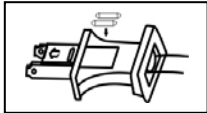
Turning on the tree

- Step 1. Plug the power cord from the tree section (C) into a proper outlet.

Maintenance

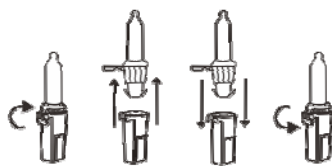
Replace the fuse.

- Grasp plug and remove from the receptacle or other outlet device. Do not unplug by pulling on cord.
- Open fuse cover. Slide open fuse access cover on top of attachment plug towards blades.
- Remove fuse carefully.
- Risk of fire. Replace fuse only with 3 Amp, 125 Volt fuse (provided with product).
- Close fuse cover. Slide closed the fuse access cover on top of attachment plug.
- Risk of fire. Do not replace attachment plug. Contains a safety device (fuse) that should not be removed. Discard product if the attachment plug is damaged.



Replace the lamp.

- Grasp plug and remove from the receptacle or other outlet device. Do not unplug by pulling on cord.
- Unlock the burned out LED bulb by lifting the hook and pulling both the bulb and plastic base straight out of the bulb holder. Do not twist bulbs.
- Replace burned out bulb with 3.0 volt, 20 mA LED type bulb ONLY. (Replacement bulbs included)
- Lock the LED bulb.



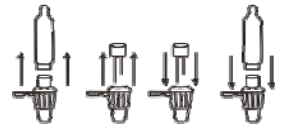
CAUTION

- To reduce the risk of overheating, replace burned-out lamps promptly. Use 3.0 Volt, 20 mA LED lamps only.

- Risk of fire. This product does not contain lamp shunts, which allow the product to operate if one lamp burns out. Replace lamps only with the spare lamps provided with this product.

If the new lamp base does not fit in lampholder, follow the steps below before step c.

- Pull the reflector out.
- Remove the base of burned out lamp by straightening lamp leads and gently pulling lamp out.
- Thread leads of new lamp through hole in old base with one lead in each hole (always match the long lead of new lamp to the hook of lamp base.)
- After bulb is fully inserted, bend each lead up so that the leads will touch the contacts inside the bulb holder.
- Insert the reflector into the base.



CAUTION! – ALWAYS UNPLUG YOUR TREE FROM ITS

POWER SOURCE BEFORE ATTEMPTING FUSE AND BULB

REPLACEMENT.

Care and Cleaning

- Remove all ornaments and decorations.
- Unplug the cord from the wall outlet and then disconnect each section of the tree. Remove the power cords from the tree bottom (C).
- Gently lift the tree top straight up to remove from the center section and fold all branches towards the pole.
- Repeat this step for the center and bottom tree sections.
- Carefully place all tree sections into a shipping box and tape it shut.
- Store your tree in a cool, dry place away from sunlight.

Troubleshooting

Problem	Solution
The tree does not light	Ensure that connectors of all tree sections are connected into each other well. Make sure power cord plug is securely inserted into a working electrical outlet.
	Check for blown fuses at the power cord plug. Replace as needed with the replacement fuses provided.
	Check for loose, broken, or missing bulbs and replace as needed with the replacement bulbs provided.
	If you are still experiencing problems with the tree please call 1-877-527-0313 for instructions.

Model No. TMP6.5-6(0.2)